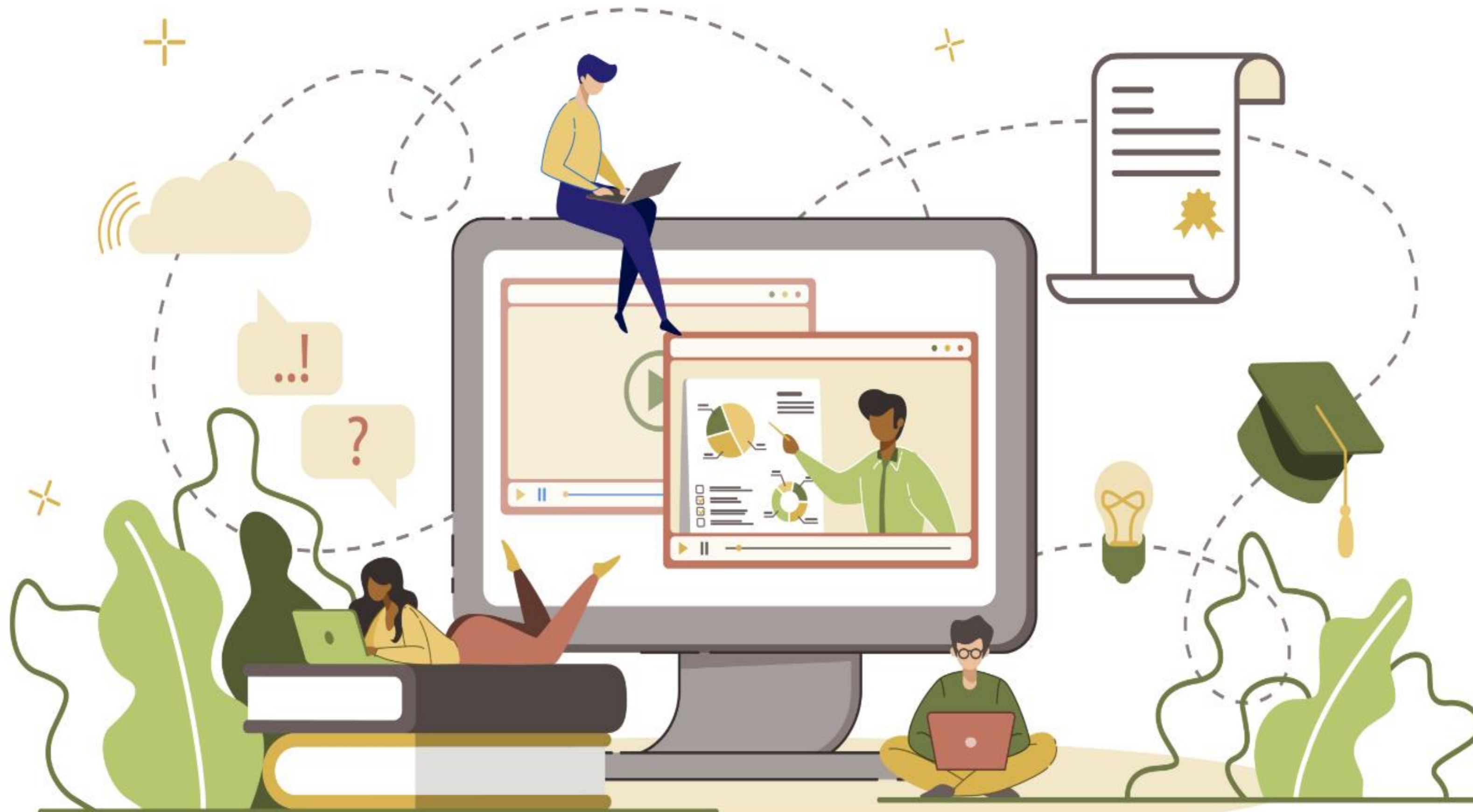


OUR COMMUNITY, EDUCATION & PHILANTHROPY:
Moving Forward Through Education

Presented by: Faun White, Strategic Philanthropy Program Officer of Education

Wednesday, February 17, 2021 • 10:00AM - 11:00AM (PST)





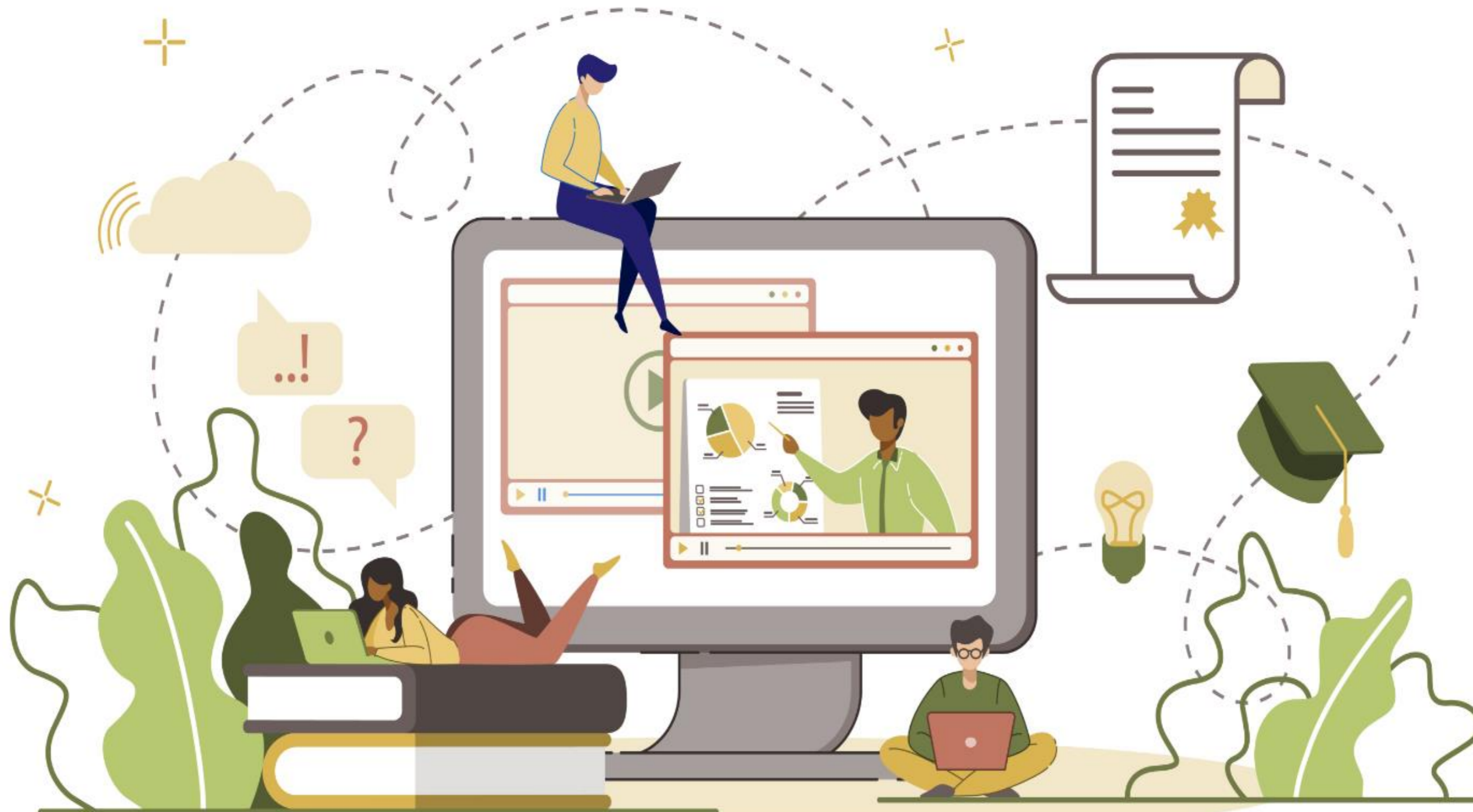
SAN MANUEL CARES

A PROGRAM OF SAN MANUEL BAND OF MISSION INDIANS

OUR COMMUNITY, EDUCATION & PHILANTHROPY:
Moving Forward Through Education

Presented by: Faun White, Strategic Philanthropy Program Officer of Education

Wednesday, February 17, 2021 • 10:00AM - 11:00AM (PST)

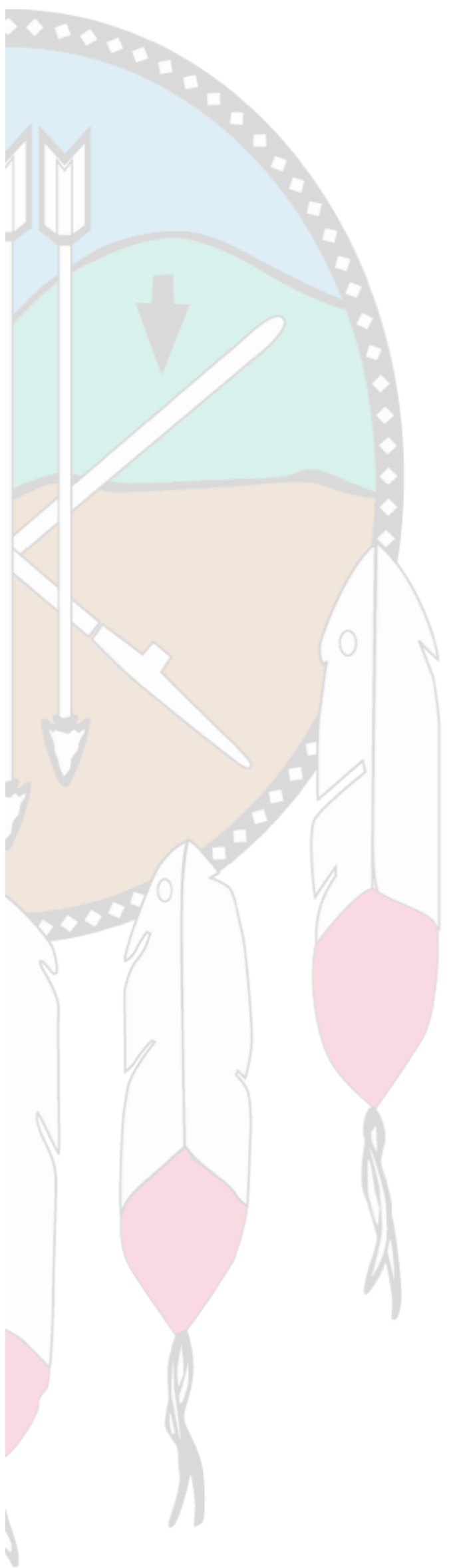


Webinar “Housekeeping” Information

- Welcome
- Introduction of Strategic Philanthropy Program Officer for Education
- Education Philanthropy Presentation
- Q&A Period
- Announcements

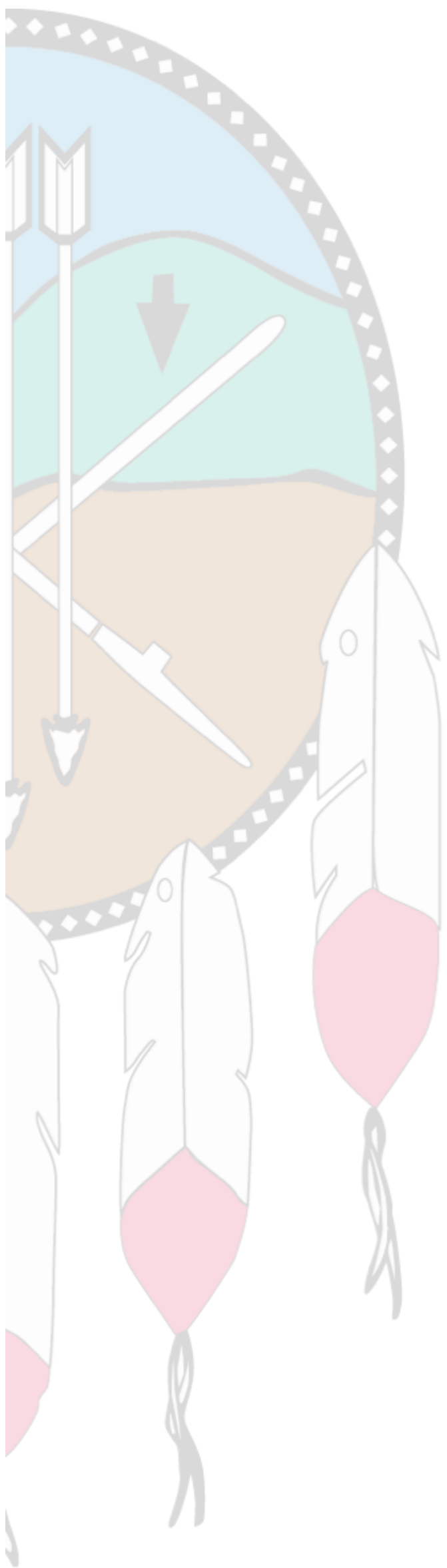
Webinar “Housekeeping” Information

- If you have questions, post them in the chat box
- Webinar will be recorded
- Presentation will be emailed after the webinar
- Survey will be emailed after the webinar
- Please remain muted during the presentation
- Turn off your camera if you’re not speaking



San Manuel Strategic Philanthropy Introduction

Faun White: Program Officer for Education



San Manuel Band of Mission Indians & Philanthropy

San Manuel Band of Mission Indians (SMBMI) & Philanthropy

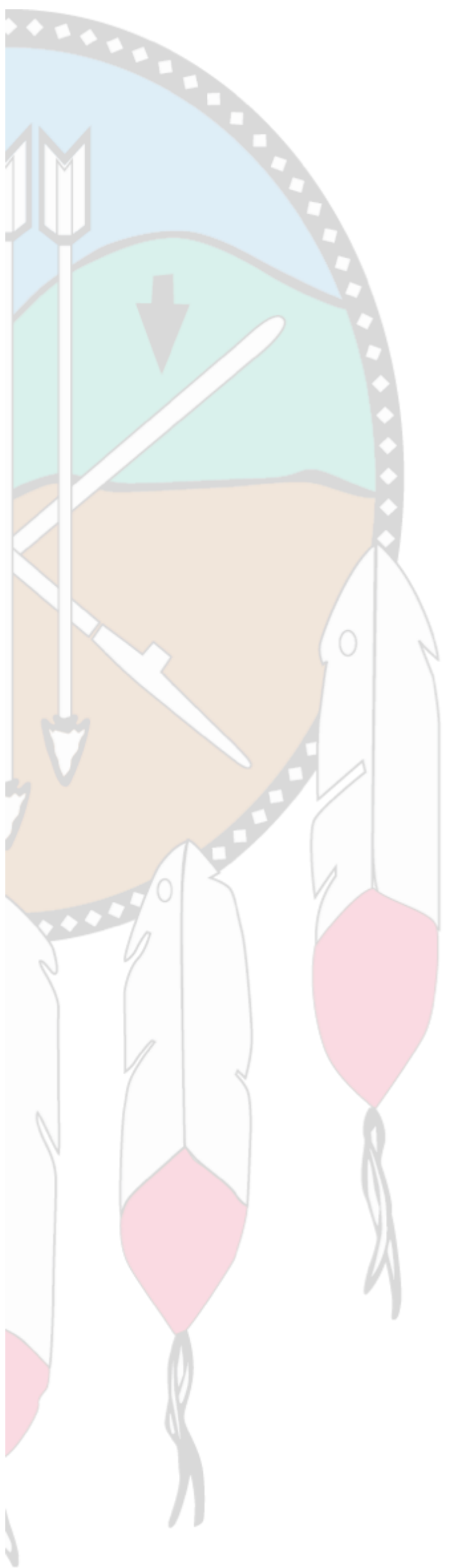
- The Act of Relief for Mission Indians was passed in 1891, which recognized the San Manuel Band of Mission Indians' inherent rights to self-govern as a sovereign nation, as bestowed upon them by their Creator
- The name “San Manuel” comes from a Yuhaaviatam leader that was known by his Spanish name of “Santos Manuel”
- The Tribe operates San Manuel Casino, generating revenue for the Tribal government and supporting neighboring communities as one of the largest employers in the Inland Empire
- By the Tribe putting their Tribal community and their neighboring communities at the center of their mission, allows for SMBMI to generously give back through several initiatives. Revenues generated through businesses and partnerships goes back to support Tribal operations, the local community, and tribal nations who do not engage in gaming.

San Manuel Band of Mission Indians (SMBMI) & Philanthropy

- SMBMI has supported more than 1,000 organizations since 2003
- The Tribe has made monetary contributions to nonprofits in the Inland Empire, native led organizations and tribal governments nationwide since 2003
- **Our giving is focused on four (4) key areas - Giving Pillars:**
 - Education — Inspiring our Future Through Education
 - Economic Development — Empowering Lives
 - Health — Reinforcing Healthy and Resilient Communities
 - Special Projects — Preserving Cultural Traditions & Empowering Indian Country
- **Commitment To Giving:** The San Manuel Band of Mission Indians support education, self-determination for all, community development, primarily in our ancestral territory; and focus on development of opportunities for Native nations across the country.

San Manuel Band of Mission Indians (SMBMI) & Philanthropy

- Why the Tribe Gives:
 - Our cultural values require that we interact with respect and humility. We continue to honor the vision of our past leaders by supporting our surrounding community and Indian Country nationwide.
 - The Spirit of Yawa' – to act upon one's beliefs – inspires SMBMI to embrace the value and worldview bestowed upon us through their Creator, while inheriting responsibilities that preserve and protect San Manuel ancestral lands and their inhabitants.
- Charitable Giving Program
- Strategic Philanthropy Department includes:
 - Strategic Philanthropy Manager
 - Program Officer - Education
 - Program Officer - Health
 - Program Associate - Special Projects
 - Operations Specialist



Strategic Philanthropy: Education Priorities

Education & COVID-19

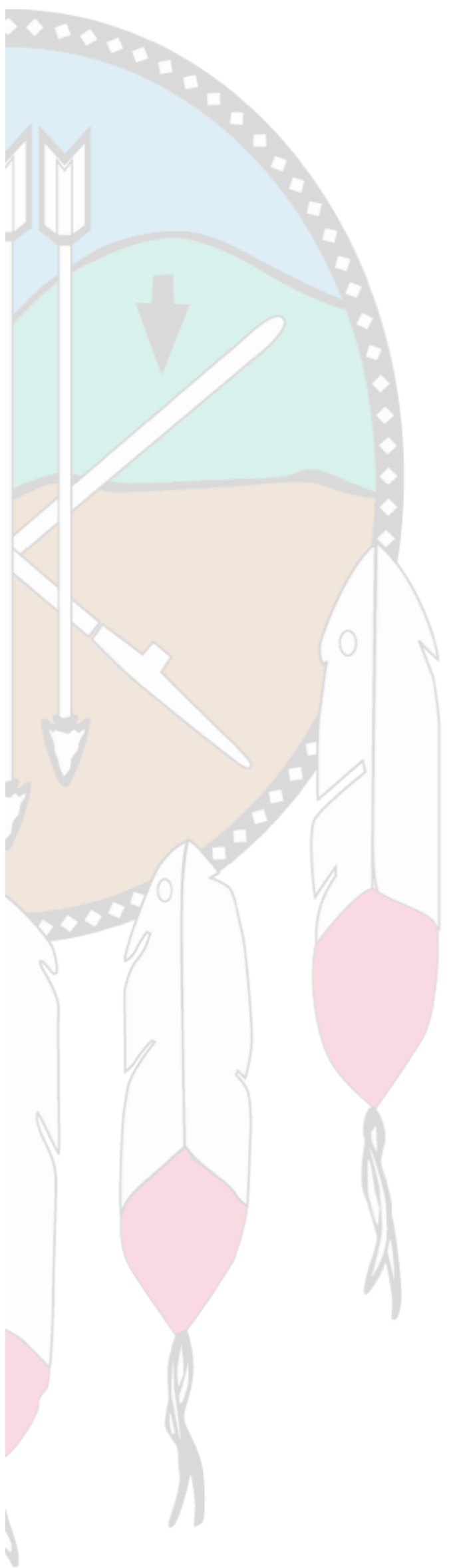
- Since March 2020, schools are transitioning to online learning
- **Things Impacting Education:**
 - Technology gap: need for laptops and Wi-Fi hotspots
 - Logging in for online learning (K-12 schools)
 - Community Colleges are experiencing a 30% drop in enrollment nationwide
 - CA Community College students are experiencing homelessness (food and housing insecurity); students are in need of Scholarships and Emergency Assistance
 - Mental Health Issues: Isolation and Depression
 - Many school districts have decided to conduct online learning through June 2021
 - Cal State University announced plans to reopen its 23 campuses by fall 2021
 - University of California system is seeking to resume classes in fall 2021
 - All education systems are being impacted by the State of California budget

Inspiring our Future Through Education

We support programs that create pathways to a better future through education.

Our funding areas include:

- S.T.E.M. programs – Girl Scouts of San Geronio
- After-school programs – Think Together
- Scholarship programs – Making Hope Happen Foundation
- College access programs – A.V.I.D. Program
- Career readiness programs – Sherman Indian High School
- Community-based arts and music programming – San Bernardino Symphony



Strategic Philanthropy: Application Process

What to Know About Our Process

- Online applications must be submitted between Feb. 1 - April 30, 2021
- Application link will not be accessible after April 30th
- Remember that only one school can apply per calendar year
- School/College should provide a principal/president letter, quotes/bids and W-9
- Applications are assigned to Program Officer accordingly
- Program Officer reviews all applications
- Phone interview/site visit/meetings will be scheduled with NPOs
- Recommendations are presented to executive leadership and Business Committee

What to Know About Our Process

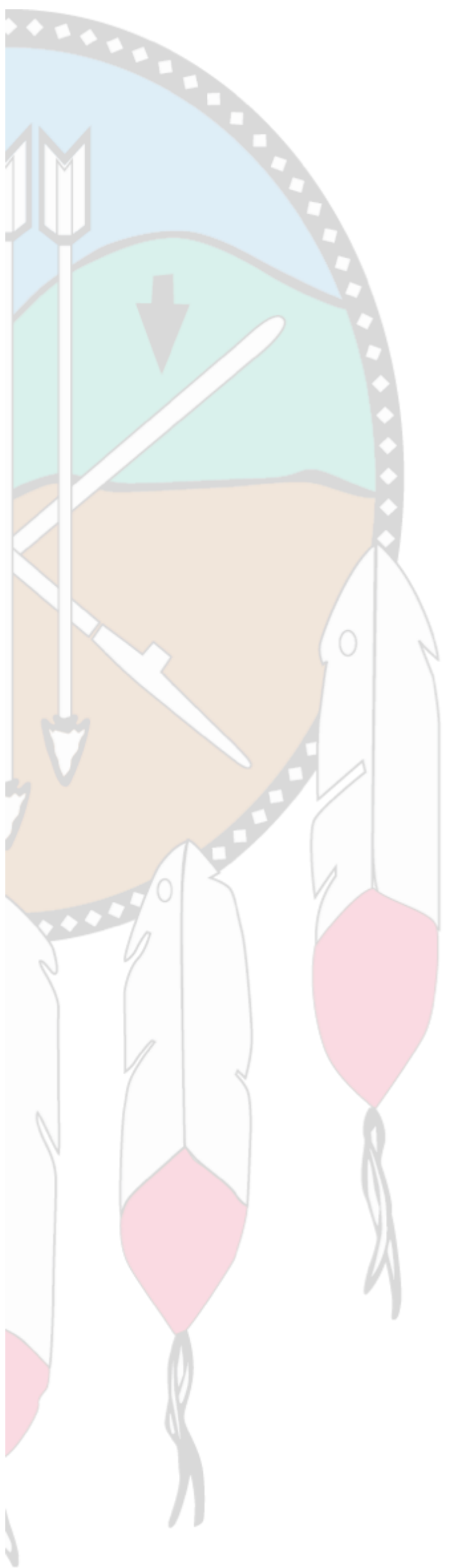
- If the application is approved:
 - Program Officer will call to notify organization by phone
 - An approval letter will be sent by email with formal letter attached
 - Donation check will be sent by mail from our Accounting Department
 - Letter and check should be sent within a 4 week period
- If application is not approved, organization will receive notification by email
 - If you are not approved, do not get discouraged and plan to re-apply next year
- Reporting:
 - 6 month Check In Report (6 months after date of letter)
 - 12 month End of Year Report (one year after date of letter)
 - Do's and Don'ts of Reporting

Do's & Don'ts of Reporting

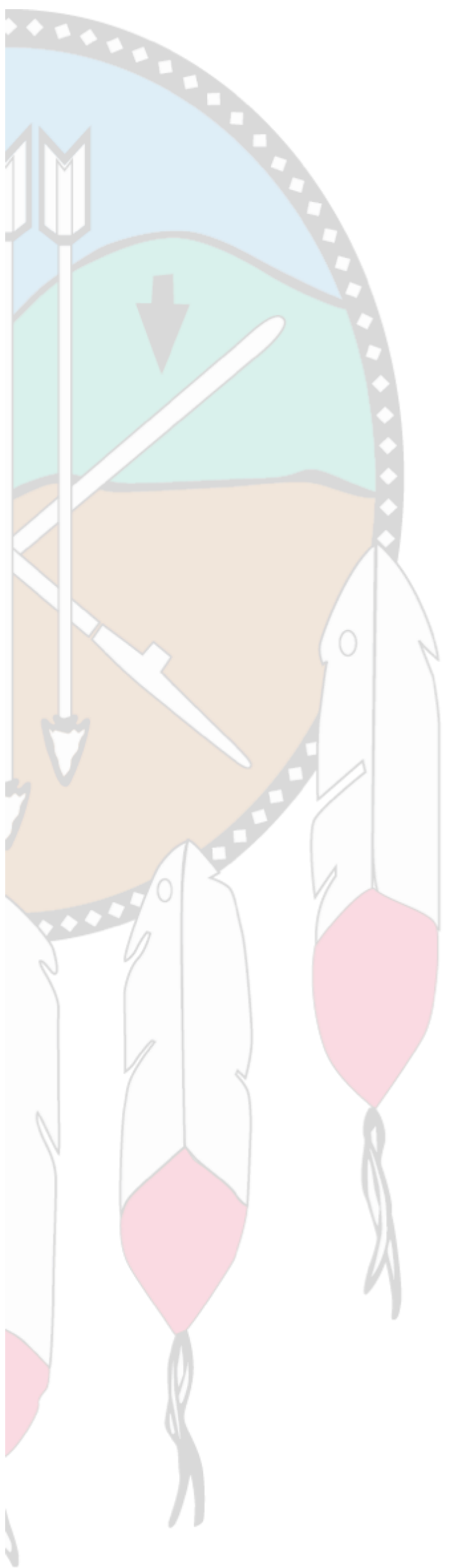
- Do:
 - Provide new contact information if there are changes to staffing
 - Expect email communication regarding the submission of your report
 - Reflect upon information that is referenced in “Attachment A”
 - Submit a budget to recap how funds were spent on the project
 - Give Program Officer 2 weeks to review and respond to the report
- Do not:
 - Submit a report without receiving instructions via email
 - Leave any section blank on the 6 month and 12 month reports
 - Copy and paste responses from different questions or previous reports
 - Submit a new application until you speak to your Program Officer

Key Takeaways

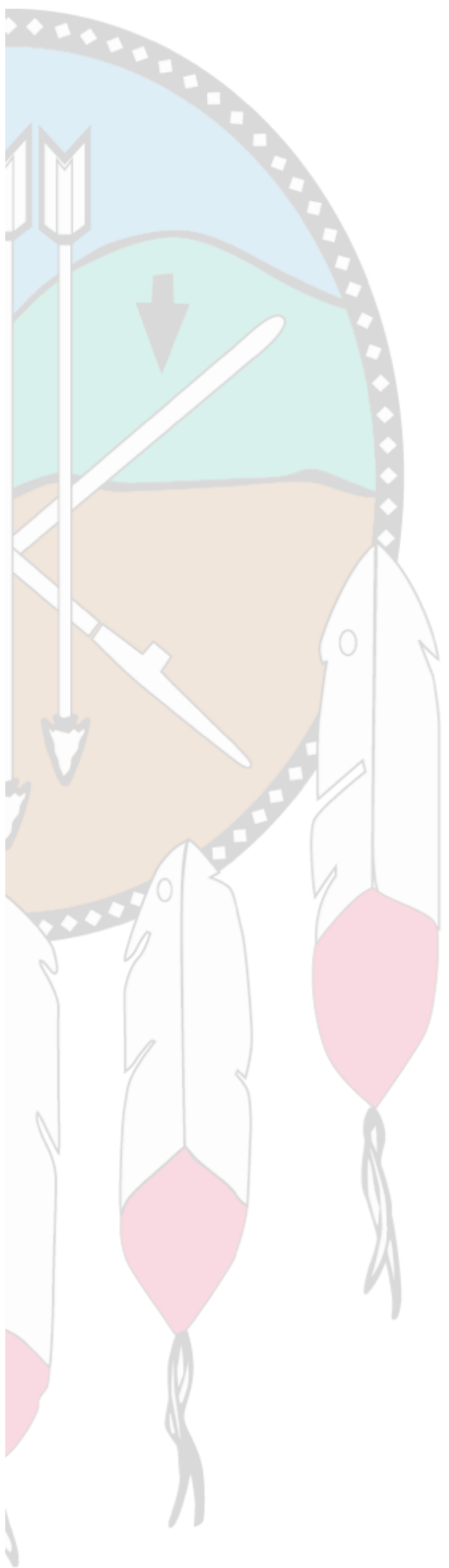
- *San Manuel Band of Mission Indians and Philanthropy*: The Tribe is one of the largest employers in the Inland Empire and supports numerous nonprofit organizations locally and native led groups nationwide.
- *Pillars*: the new Education pillar showcases specific focus areas that are important to the Tribe.
- *Application Process*: reminder that our application cycle ends on April 30, 2021.
- *Reporting*: if approved for funding, you must submit reports on a 6 and 12 month basis; be sure all sections are complete and coincide with your goals and outcomes of the grant.
- *Charitable Giving Program*: www.sanmanuelcares.org (for guidelines and information)



Q&A Period



Announcements



Thank you!
